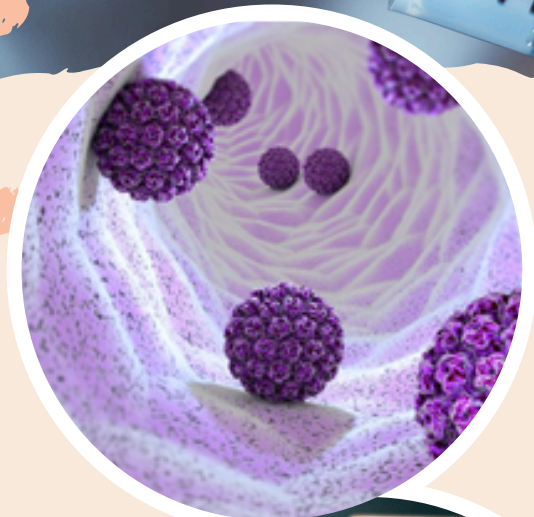


NEW

HPV Controls



QUANTITATIVE STANDARDS CONTROLS

NATtrol HPV 16 Stock (NATHPV16-STQ) contains CaSki cells that contain human papillomavirus type 16 (HPV16) DNA integrated into the genome.

NATtrol HPV 18 Stock (NATHPV18-STQ) contains HeLa cells that contain human papillomavirus type 18 (HPV18) DNA integrated into the genome.

The cells have been chemically modified to render them refrigerator stable. The control is supplied in a proprietary matrix.

NATtrol HPV 16 and 18 Stock is an external run control intended to be used with molecular assays that detect nucleic acids from HPV 16 and HPV 18.

The control can be used to monitor the process steps of extraction, amplification and detection. The control can also be used for training and evaluation of operator variation.

Product Offering

NATHPV-16-STQ

NATHPV-18-STQ

Contact **Sep Sci** for more information.

Separation Scientific

Tel: 011 794 4117 | Email: info@sepsci.co.za | Web: www.sepsci.co.za