

# TPHA

Determination of anti-Treponema pallidum antibodies

MICROPLATE

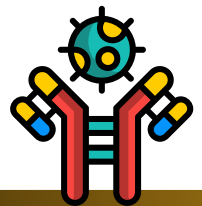
HAEMAGGLUTINATION

TPHA 200 tests: Includes Positive and Negative controls

**SYPHILIS**

The **TPHA (Treponema Pallidum Hemagglutination)** is a specific hemagglutination test for the qualitative and semi-quantitative detection of anti-T. pallidum antibodies in human serum. Stabilized chicken erythrocytes sensitized with an antigenic T. pallidum solution, agglutinate in the presence of anti-T. pallidum antibodies to give a characteristic pattern.

- ✓ Syphilis, caused by the *Treponema pallidum*, is a chronic infection with many diverse clinical manifestations that occur in distinct stages.
- ✓ The anti-T. pallidum antibodies appears in the first stage and may persist in the 85-90% of treated patients after they have been treated and cured.
- ✓ Since this pathology frequently does not give signs and symptoms and its contagiousness is prolonged, it is essential to use highly sensitive and specific serological tests for screening.



**For in vitro diagnostic use only**

Contact **Sep Sci** for more information.

**Separation Scientific**

Tel: 011 794 4117 | Email: [Info@sepsci.co.za](mailto:Info@sepsci.co.za) | Web: [www.sepsci.co.za](http://www.sepsci.co.za)

