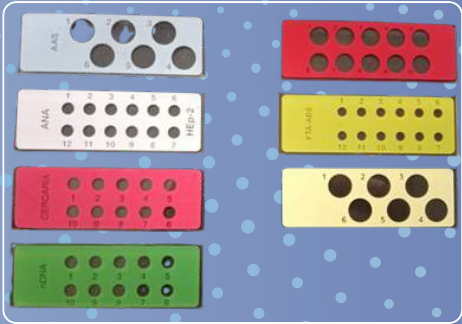
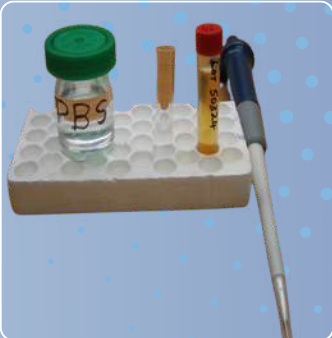
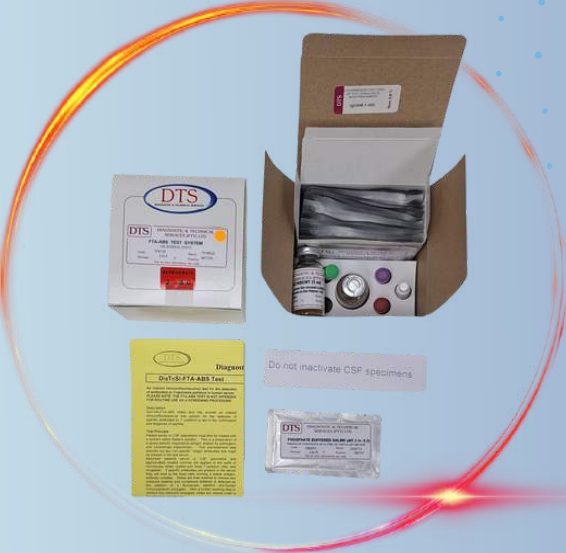




**DTS** is a proudly South African company involved in the manufacturing and distribution of Medical Devices such as Diagnostic Kits and Reagents for Pathology and Research use.

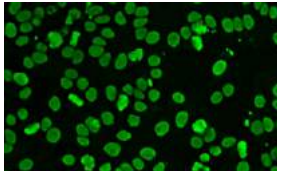


# DTS Offering

## Autoimmune Diseases

### Indirect Immunofluorescence

- COMPOSITE BLOCK (AUTOANTIBODY SCREEN)
- AUTOANTIBODY SCREEN KIT
- CRITHIDIA rDNA FAT
- CRITHIDIA rDNA FAT KIT
- Hep-2 FOR ANA FAT
- Hep-2 FOR FAT KIT
- SKIN FAT (PRIMATE OESOPHAGUS)
- ENDOMYSIAL (DISTAL PRIMATE)
- ENDOMYSIAL FAT KIT (DISTAL PRIMATE)
- RAT TESTES FAT SLIDE



## Parasitic Diseases

### Eliza Test Kits

- AMOEBIC ELISA TEST KIT (IgG)
- BILHARZIA ELISA TEST KIT (IgM)
- BILHARZIA ELISA TEST KIT (IgG)

### Indirect Immunofluorescence

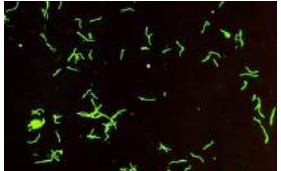
- CERCARIA FAT ANTIGEN
- CERCARIA FAT KIT (IgG only)
- CERCARIA FAT KIT (IgM only)
- CERCARIA FAT KIT (IgA only)
- CERCARIA FAT KIT (IgG, IgM & IgA)



## Infectious Diseases

### Indirect Immunofluorescence

- FTA - ABS TEST KIT
- PBS TWEEN
- SORBENT FOR FTA - ABS TEST
- 3% NORMAL YOLK SAC



## Buffers, Reagents and Conjugates

- CONJUGATE DILUENT (FITC)
- CONJUGATE (FITC) POLYVALENT Ig
- CONJUGATE (FITC) MONOVALENT IgG
- BUFFERED GLYCEROL MOUNTING MEDIUM
- BUFFERED GLYCEROL MOUNTING MEDIUM
- BUFFERED GLYCEROL MOUNTING MEDIUMPHOSPHATE BUFFERED SALINE Ph7.2 approx.



**Diagnostic and Technical Services** a member of the Sep Sci Group

Tel: 011 794 4117 | Email: [Info@sepsci.co.za](mailto:Info@sepsci.co.za) | Web: [www.sepsci.co.za](http://www.sepsci.co.za)