



# MULTISURE® HIV 1/2 Confirmatory Test

MP Diagnostics MULTISURE® HIV 1/2 Confirmatory Test is a qualitative immunochromatographic assay for the rapid in vitro detection and differentiation of antibodies to Human Immunodeficiency Virus Type 1 and 2 (HIV-1 and HIV-2) in human serum or plasma.

## **SOLUTION TO CONFIRMATORY TEST IN <30 MINUTES...**

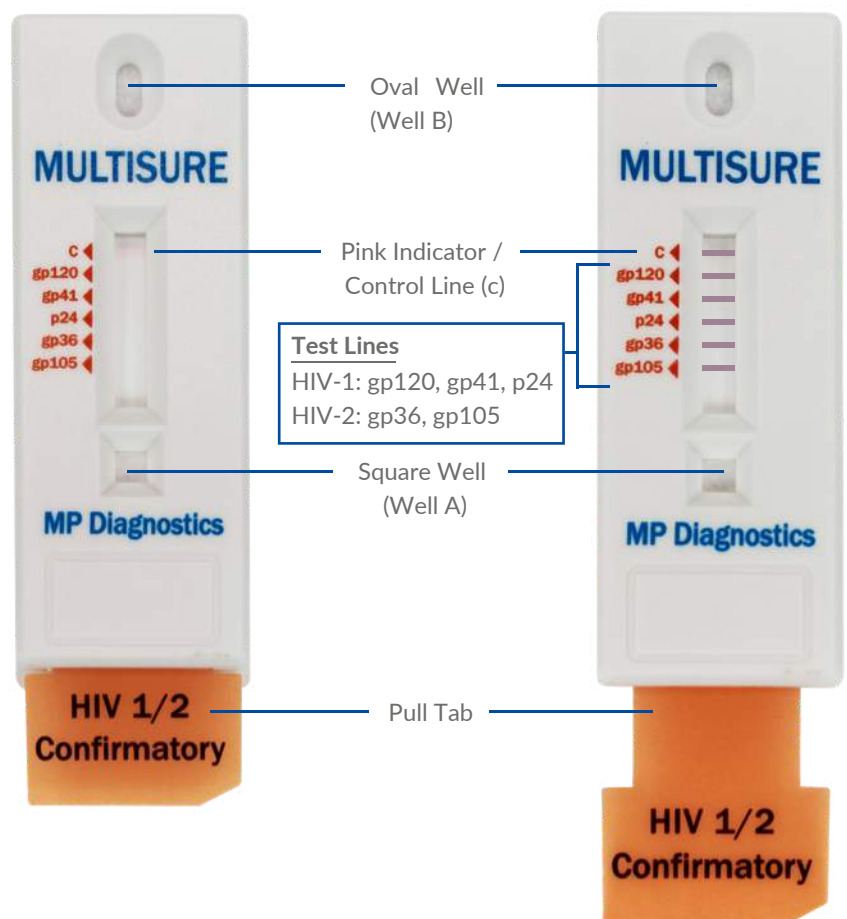
- ✓ Confirm and Differentiate HIV-1 and HIV-2
- ✓ Accurate Result
- ✓ Simple Workflow
- ✓ Flexible: Manual or Automatic Reading of Result
- ✓ Wide Temperature Storage (2 °C–30 °C)



## YOUR PARTNER IN DIAGNOSTICS

MP Biomedicals is a leading global corporation with a long-standing history of manufacturing high-quality diagnostic products, including Immunoblot, ELISA, RIA, and Point-of-Care Testing (POCT) products. As the global market leader in the field, we endeavor to raise the bar for HIV testing.

MULTISURE® HIV 1/2 Confirmatory Test is intended as a rapid confirmatory test, developed to detect and differentiate antibodies specific to HIV-1 gp120, HIV-1 gp41, HIV-1 p24 and HIV-2 gp36, HIV-2 gp105 antigens in human serum or plasma.



Device Image (Before test)

Device Image (After test)

Example of test device with all visible test lines

# TOTAL DIAGNOSTIC PERFORMANCE

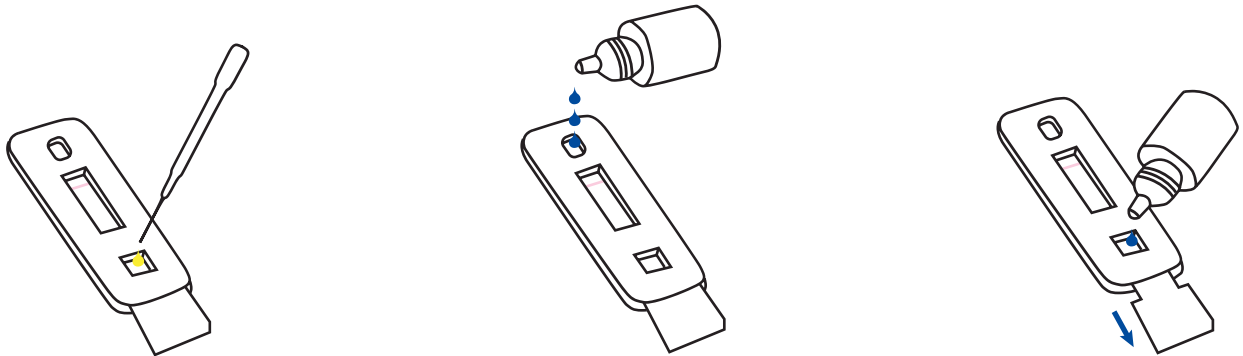
Diagnostic Parameter	Performance of MP Diagnostics MULTISURE® HIV 1/2 Confirmatory Test	95% Confidence Interval
Diagnostic Sensitivity	100.00% (396/396)	99.1% to 100.0%
Diagnostic Specificity	98.3% (510/519) (9 Indeterminate for HIV Antibody)	96.7% to 99.2%
Positive Predictive Value	97.8%	95.8% to 98.8%
Negative Predictive Value	100.00%	NA

# CLINICAL PERFORMANCE

Diagnostic Parameter	Sample Profile	Total Sample Size (n)	Performance of MP Diagnostics MULTISURE® HIV 1/2 Confirmatory Test
Diagnostic Sensitivity	HIV-1 Seropositive	50	100% (50/50)
	HIV-2 Seropositive	26	92.3% (24/26) (2 Indeterminate for HIV antibody)
Diagnostic Specificity	Total	76	97.4% (74/76) (2 Indeterminate for HIV antibody)
	HIV-Negative	50	100% (50/50)



## SIMPLE ASSAY PROCEDURE



- Add **25 µL sample** into the square well

- When sample front reaches the pink indicator line, add **3 drops of chase buffer** into the oval well.
- Do not allow sample front to flow out of test viewing window.

Pull the HIV tab until resistance is felt.

- Add **1 drop of chase buffer** into the square well.
- Start the timer.
- Read result at **25 mins.**
- Do not read result after 35 mins.



Scan the QR code to watch the detailed instructional video

## ENHANCED ASSURANCE



Monitor the performance of MULTISURE® HIV 1/2 Confirmatory Test with **MULTISURE® HIV 1/2 Confirmatory Test Controls**





# YOUR OPTION FOR AUTOMATION

Automate your rapid test workflow with:

**iPeak® 4.3" Lateral Flow Reader**

**MP Diagnostics Rapid Test  
Report Generator Software**



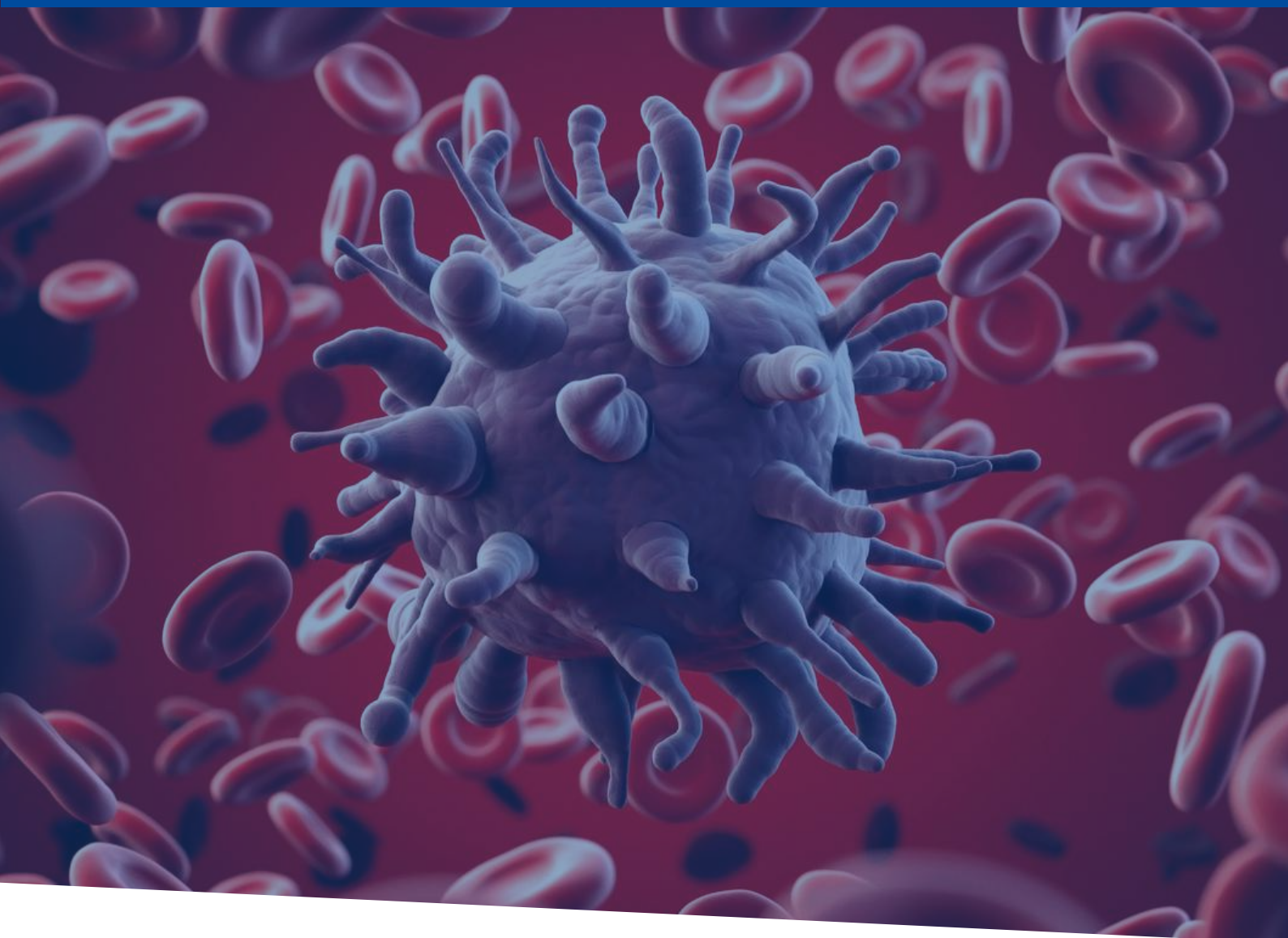
- Enables objective reading
- Reduces error and variability
- Simplifies data management and archiving
- Robust & user-friendly
- Minimal training required

The iPeak® reader 4.3" Lateral Flow Reader provides qualitative in-vitro measurement of immunochromatographic test. Both iPeak® 4.3" Lateral Flow Reader and MP Diagnostics Rapid Test Report Generator software have been validated on the following test devices:

- |  |   |
|--|---|
| • MULTISURE HIV 1/2<br>Confirmatory Test | • MULTISURE Dengue Ab/Ag<br>Rapid Test    |
| • MULTISURE HCV Antibody<br>Assay        | • ASSURE SARS-CoV-2 IgG/IgM<br>Rapid Test |
| • MULTISURE HIV Rapid Test               | • ASSURE H. pylori Rapid Test             |
| • ASSURE TB Rapid Test                   | • ASSURE HEV IgM Rapid Test               |

Want to learn more? Scan the following QR code to watch the real action:





## ORDERING INFORMATION

Name	Size	Cat. No.
MULTISURE® HIV 1/2 Confirmatory Test	20 tests	0793030020
MULTISURE® HIV 1/2 Confirmatory Test Controls	6 tests	0790030006
iPeak® 4.3" Lateral Flow Reader	1 unit	07EMC045
Rapid Test Report Generator Software*	1 unit	07EMC042

*\*The Rapid Test Report Generator Software is available for free with the purchase of iPeak 4.3" Lateral Flow Reader.*



Contact **Sep Sci** for more information.

**Separation Scientific**

Tel: 011 794 4117 | Email: [Info@sepsci.co.za](mailto:Info@sepsci.co.za) | Web: [www.sepsci.co.za](http://www.sepsci.co.za)